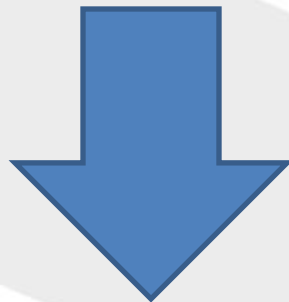


# ضبط اعدادات DNS



اختر نظام التشغيل الخاص بجهازك  
Choose Your operating system



[Back To choices](#)



# Windows Setting



Please click on icon to start working

يرجى الضغط عدة مرات لتمكين الاتصال



Local Area Connection  
Disabled  
Marvell Yukon 88E8056 PCI-E ...



Local Area Connection  
Connected  
Marvell Yukon 88E8056 PCI-E ...



Click here to  
continue

اضغط هنا  
للمتابعة

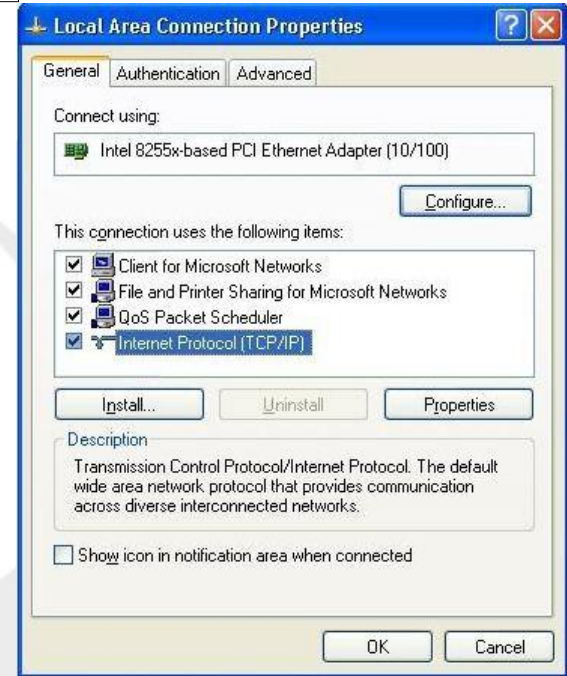
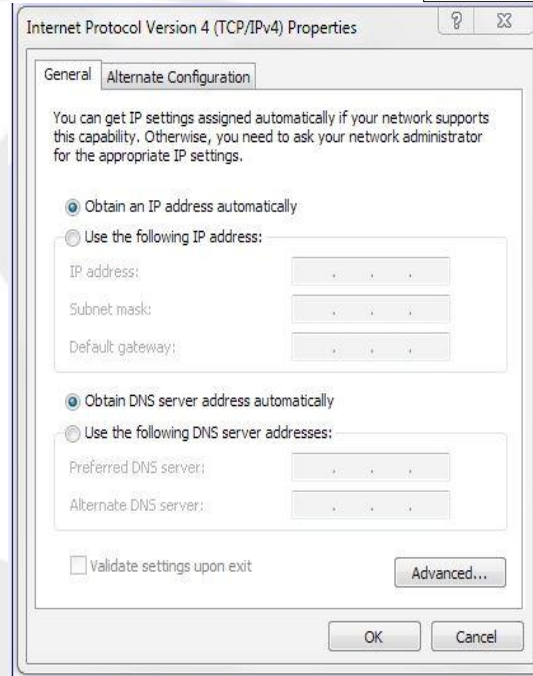


# Windows Setting

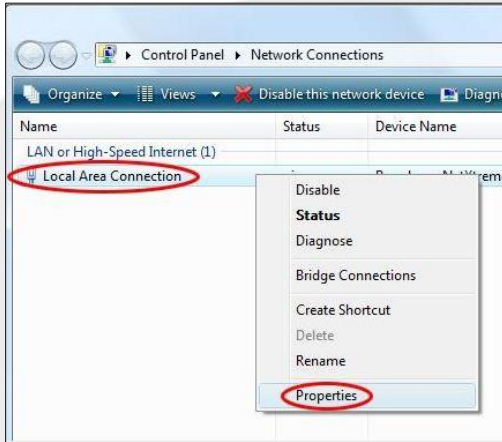


Check the setting to be like picture, if problem still exist, ask customer to try another PC

تأكد من الإعدادات حتى تكون كما في الصورة،



# Windows Setting

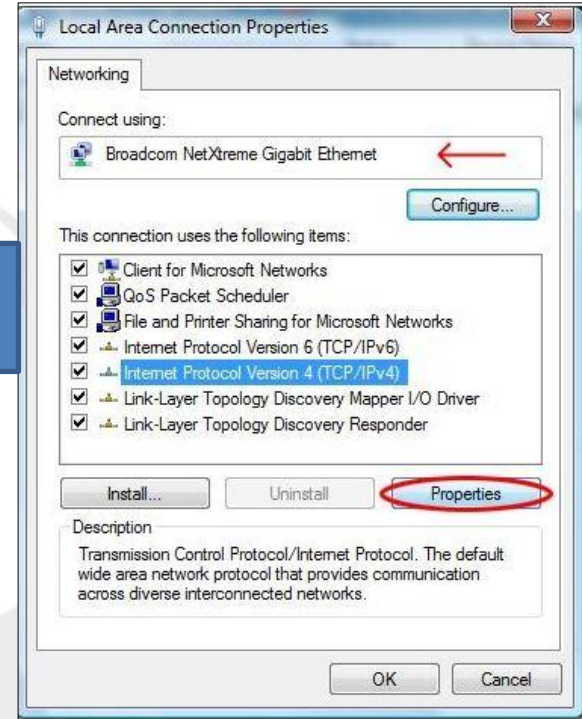
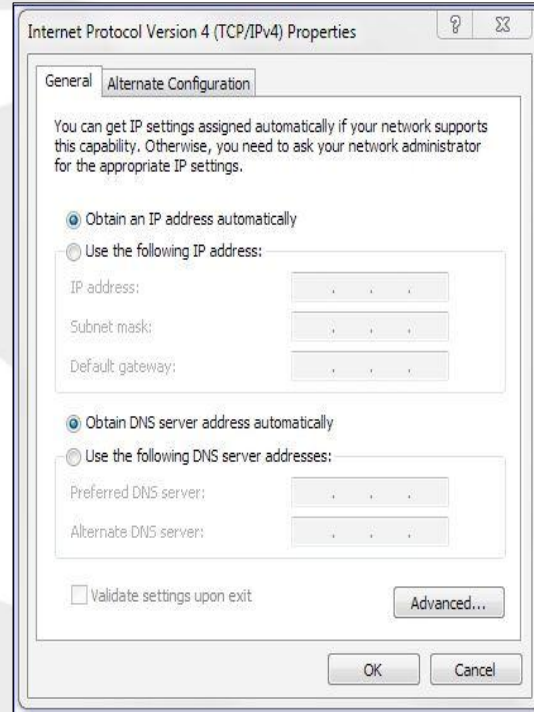


# Windows Setting



Check the setting to be like picture, if problem still exist, ask customer to try another PC

تأكد من الإعدادات حتى تكون كما في الصورة



[Back To choices](#)

# Windows Setting



Local Area Connection Status

General

Connection

|                    |                    |
|--------------------|--------------------|
| IPv4 Connectivity: | Internet           |
| IPv6 Connectivity: | No Internet access |
| Media State:       | Enabled            |
| Duration:          | 00:05:40           |
| Speed:             | 100.0 Mbps         |

Details...

Activity

|                |          |
|----------------|----------|
| Sent           | Received |
| Bytes: 168,499 | 205,080  |

Properties Disable Diagnose

Close

Network and Sharing Center

View your basic network information and set up connections

See full map

AEADH-PC (this computer) ECCO Outsourcing 3 Internet

Active networks

ECCO Outsourcing 3 Home network

Access type: Internet  
HomeGroup: Joined  
Connections: Local Area Connection

Currently connected to:

atheeb.net Internet access

Open Network and Sharing Center

EN 2:35 PM 8/30/2010

Next Page  
الصفحة التالية

[Back To choices](#)





# Windows Setting



Check the setting to be like picture, if problem still exist, ask customer to try another PC

تأكد من الإعدادات حتى تكون كما في الصورة

